

Clock Programming Guide

ControlClock Software

LAN TCP/IP



ControlClock – User Guide

1. ControlClock – Software Description	3
1.1 System requirements.....	3
1.2 Program installation	3
1.3 ControlClock – start window	3
1.4 Menu Description.....	3
1.5 Port setting for TCP/IP communication.....	4
1.6 Ending the application	4
2. List of Clocks	5
2.1 Making a List of Clocks.....	5
2.2 Removing clock from list.....	6
2.3 Editing Items in the List	7
3. Profile.....	8
3.1 Creating new profile.....	8
3.2 Resetting the Profile	10
3.3 Transmission of Profile into the clock	10
3.4 Reading Log File	11
4. Notes	12

1. ControlClock – Software Description

ControlClock is a PC based software application, which is used for configuring break and work shifts schedule profiles settings of the NDC clocks with LAN TCP/IP connection.

1.1 System Requirements

System requirements are: PC with operating system Windows 8 / 7 / Vista / XP with minimal resources and LAN connection.

1.2 Program Installation

Copy folder ControlClock from the CD to your PC hard drive and run the **ControlClockSetup.exe** installation file.

1.3 ControlClock – start window

When the ControlClock you shall see the initial window as in Fig. 1.

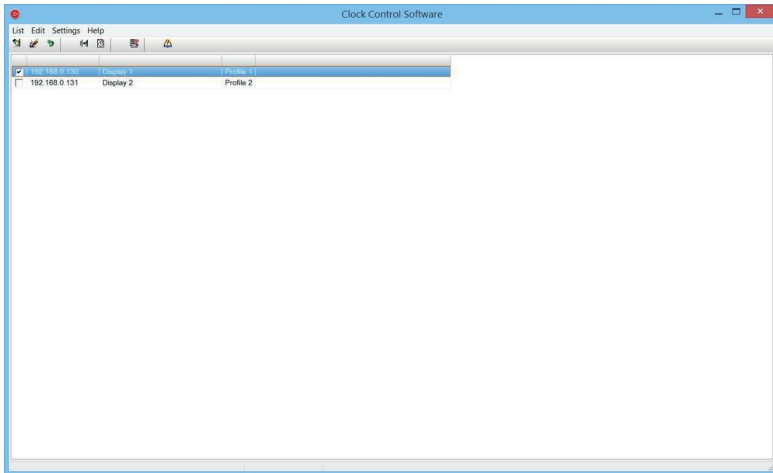


Fig. 1. Application start window

1.4 Menu Description

The application start window contains the following menu items in the top menu bar:

- List** contains exit selection for ending the application
- Edit** editing and adding clocks to list, also shows log file
- Settings** used for setting communication parameters, creating profiles and sending new settings into clocks
- Help** starts the manual and information about the application

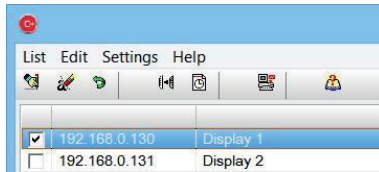


Fig. 2. Main menu

1.5 TCP/IP Communication Port

When running the program for the first time it is necessary to set the correct communication port.

In the top menu bar select: **Settings->Communication.**

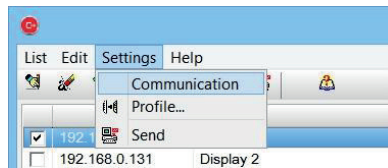


Fig. 3. Setting the communication port

This will open window as in Fig. 4. Set the correct Port number and click OK. Port number must be the same as port number set in the clocks.

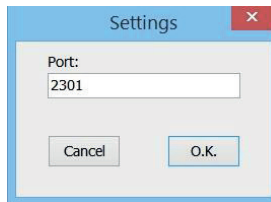


Fig. 4. Enter corresponding Port number

Note: If the Port number is incorrect the communication with clocks will not be established.

1.6 Ending the application

To end the application select: **List->Exit**, or click on **X** in the top right window. See Fig. 5.

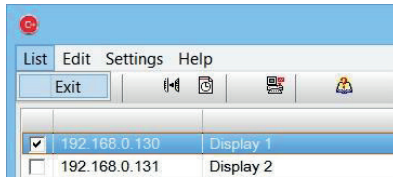


Fig. 5. Exiting application

2. List of Clocks

At first it is necessary to make a list of installed clocks. Each clock has the following identification parameters in the list (see Fig. 6):

- IP address** - IP address of clocks connected to LAN ethernet network
- Description** - brief description in regards to each clock location (e.g. Hall1, Kitchen main clock, Lobby, Warehouse ...)
- Profile** - clock profile settings name (e.g. Profile 1, 2...)
- Last action message** - status of last communication with the clock

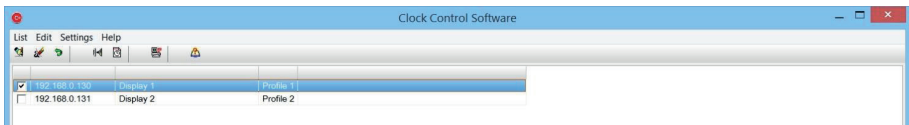


Fig. 6. List of clocks

2.1 Making a List of Clocks

In the top menu bar select: **Edit->Add** or click the icon **Add**, see Fig. 7 and 8. This will open a dialog window to enter the new clock record.

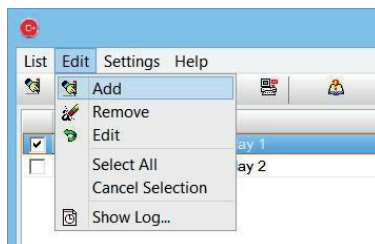


Fig. 7. Menu for adding clocks to list

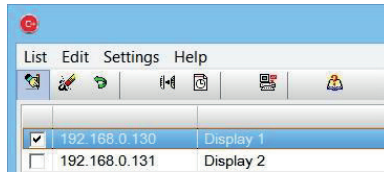


Fig. 8. Button for adding clocks to list

Enter all fields with data as shown in Fig. 9 and click OK.

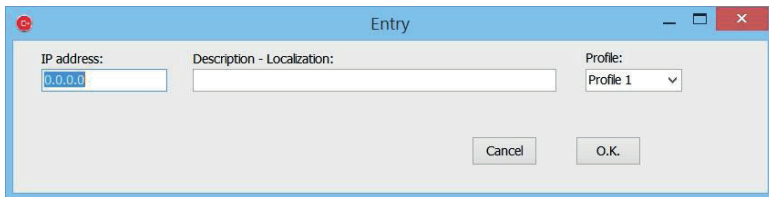


Fig. 9. New item entry for the list

Note: New item will be added below the selected item in the list.

2.2 Removing clock from list

In the top menu bar select: **Edit->Remove** or click on the Remove icon. Confirmation of action will be displayed.

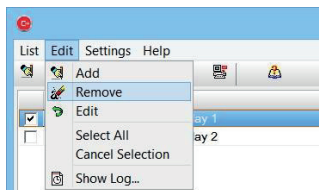


Fig. 10. Menu for removing item from list

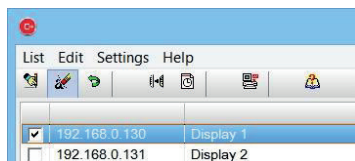


Fig. 11. Button for removing item from list

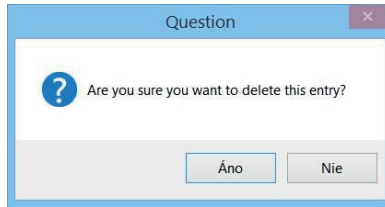


Fig. 12. Confirmation dialog.

2.3 Editing Items in the List

In the top menu bar select: **Edit->Edit** or click on icon **Edit**, see Fig. 13 and 14. This will open a dialog window of item entry settings as in Fig. 9.

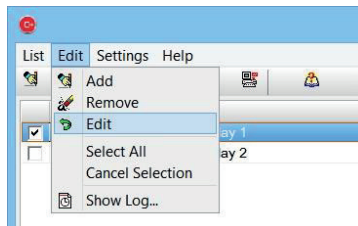


Fig. 13. Edit menu

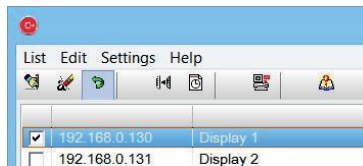


Fig. 14. Button for editing list item

Confirm the changes by clicking on OK button.

3. Profile

Profile is a collection of parameters which are necessary to set each specific clock in the clock list. It is possible to prepare 10 different profiles and these can be assigned to each clock.

Each profile contains:

- Table of breaks and work shifts
- Brightness curve setting of display
- Siren settings
- Clock synchronization settings

3.1 Creating new profile

In the top menu bar select: **Settings->Profile** or click on the icon **Profile**, see Fig. 15 and 16. It will open a dialog window which has 10 possible profiles, see Fig. 17.

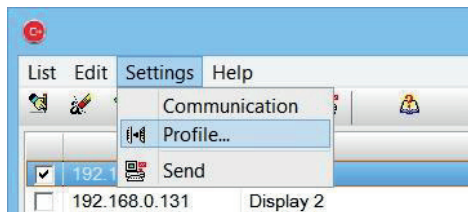


Fig. 15. Profile menu

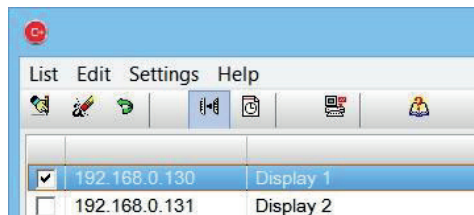


Fig. 16. Profile button

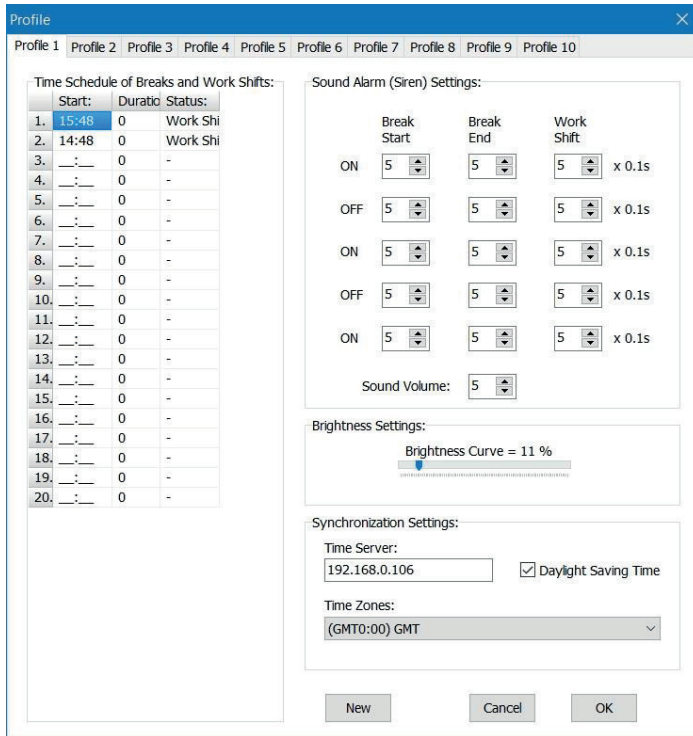


Fig. 17. Profile dialog window

Double-click on the position of Time Schedule, which you want to change. This will open a dialog window for setting the time and duration of break, or start and end of work shift, see Fig. 18.

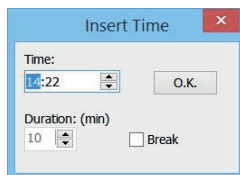


Fig. 18. Information about break or work shift

Set the **Time** of begging of sound alarm (siren), select type of signalization by checking the field "**Break**" if you are setting a break. Then set **Duration** of break in the range of 1 to 99 minutes. If you are setting a work shift and not break, just uncheck the Break field. Click on **OK** button to confirm it.

Using the same procedure set the necessary number of breaks and work shifts as needed.

Set the Brightness curve in the range of 0 to 100% according to desired brightness of the clock.

Set the sound alarm (siren) volume level from 0 to 9 and also the time duration for individual siren tones.

Set the IP address of NTP time server for time synchronization.

Check the Daylight Saving Time as desired.

It is also possible to set the time zone against GMT, depending on your time zone location.

3.2 Resetting Profile

Click on button **New** in the dialog window as in Fig. 17. You will see the confirmation window as on Fig. 19. If you select Yes, the entire profile will be reset to default settings.

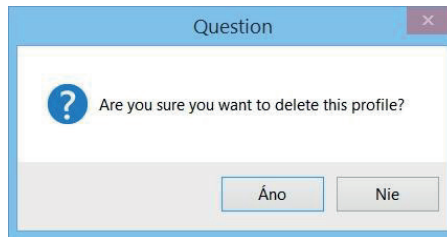


Fig. 19. Confirmation window

3.3 Sending Profile to Clock

In the list of clocks, select those clocks to which you want to send new settings. (Check mark in the first field, see Fig. 20.)

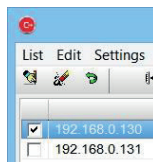


Fig. 20. Selecting items for sending profile to clock

In the top menu bar select: **Settings->Send** or click on icon **Send**, see Fig. 21 and 22. Information log window will open. It informs the user about the ongoing communication with clock, see Fig. 23.

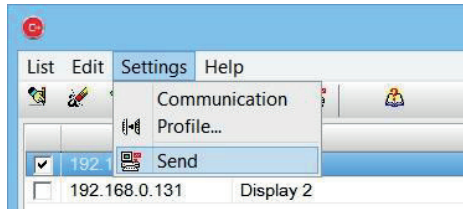


Fig. 21. Send menu

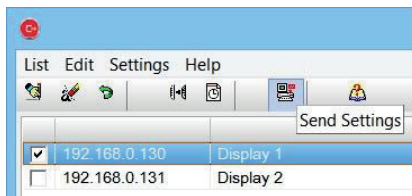


Fig. 22. Button to send new settings to clock

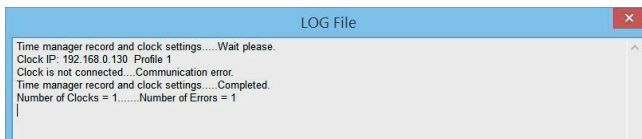


Fig. 23 Information about ongoing communication with clock

3.4 Reading Log File

In the top menu bar select: **Edit->Show Log...** or click on icon **Log file**, see Fig. 24 and 25. It will open the log file window, see Fig. 26.

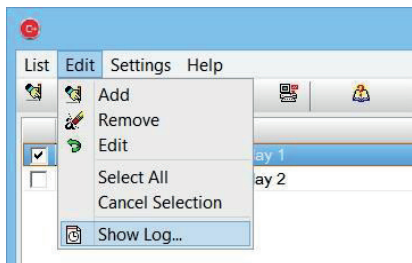


Fig. 24. Show Log menu

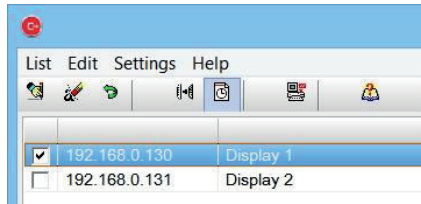


Fig. 25. Show Log file button

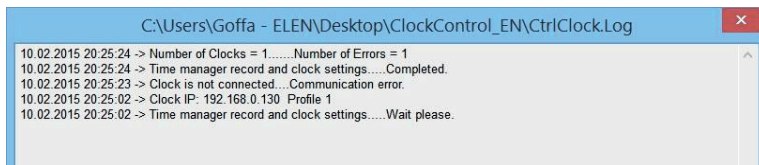


Fig. 26. Information log file, shows communication with clocks

4. Notes:

(Write your own comments.)