



The NDI series displays are designed for demanding industrial conditions and are intended for the displaying of output numerical values of various measured physical quantities (weight, temperature, speed...). The displays' casings are of a proved double-wall design, made of zinc-plated steel sheets, powder paint coated. Anti-reflection dark front glass is made of 5 mm PPMA, which ensures a good contrast. In order to limit the impact of vibrations, the internal electronics is mounted flexibly on rubber blocks. Industrial power supply and data connectors ensure a reliable electric connection. The NDI and NDU displays have a floating decimal point. In the free area right of the digits it is possible to place a fixed description as necessary, e.g. °C, kg, t, ks, mm, m/min, %, etc. Compared to the NDI series, NDU series displays are of a less robust design which makes them more suitable for light industry, or office applications.



The NDI... W types are fitted with special symbols and they are intended for weighing applications.



The NDU types have a frame made of anodized aluminum profile and they offer an aesthetic solution while maintaining other properties of the NDI series, except flexibly mounted electronics.



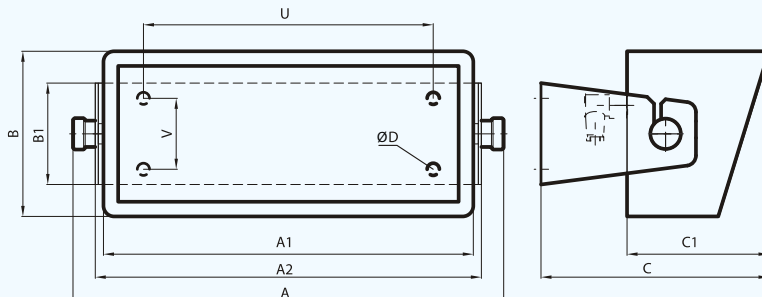
For outdoor use, the digits of the NDI series displays have superbright elliptic LEDs, which ensure good readability also in sunlight.

Technical Specifications

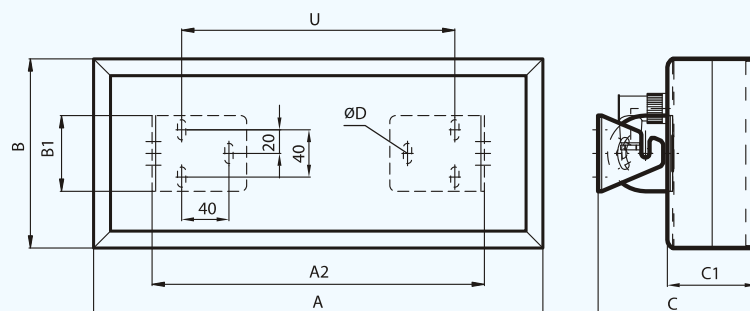
		NDI 57/x NDU 57/x	NDI 100/x NDU 100/x	NDI 57/5 W	NDI 100/5 W	NDI 212/5 W
Height of characters		57 mm	100 mm	57 mm	100 mm	212 mm
Number of digits		3, 4, 5	3, 4, 5	5	5	5
Format		8.8.8. ...	8.8.8. ...	8.8.8.8.8.	8.8.8.8.8.	8.8.8.8.8.
Readability range		23 m	40 m	23 m	40 m	100 m
Type of display elements	Numerical displays for indoor use	7-segment superbright LEDs, luminous intensity ca. 46 mcd per segment, viewing angle 120°				
	Numerical displays for outdoor use	Discrete superbright LEDs				
Communication interface		Serial RS232 / RS485 with galvanic separation (switchable inside the device), Ethernet TCP/IP, Profibus DP, passive input BCD 24 V with galvanic separation, LonWorks® FTT-10, parallel, analog inputs (0-10 V, 0-20 mA, 4-20 mA, counter 1 kHz), and other upon request				
Communication protocol		ELEN, Schenck DDP 8850, DDP 8861 (Disomat B, Disomat F), Profibus DP, Intecont Plus, Orbit Controls, LonTalk, and other upon request				
Power supply		110 V / 230 V, tolerance +6/-10%, 50 Hz				
Data / mains connector		Binder 713 / Binder 714				
Class of protection (NDI / NDU)		IP 65 / IP 43				
Operational temperature		-30°C ÷ +50°C				
Displaying of statuses in weighing applications						
Displaying of units		-		g, kg, t		
Net weight		-		Indicated by NET on display		
Stable zero reading		- 0 -		Indicated by - 0 - on display		
Unstable weight		Blinking reading		Blinking weight unit		
Stable weight		Stable reading		Stable reading, weight unit not blinking		
Tare		Alternately blinks ERR and reading		Blinking symbol NET		
Overflow		-		Indicated by out on display		
Control unit error		-		Indicated by Err on display		
Overrun of maximal preset value		-		Indicated by ooo on display		

NDI... / NDU... Series

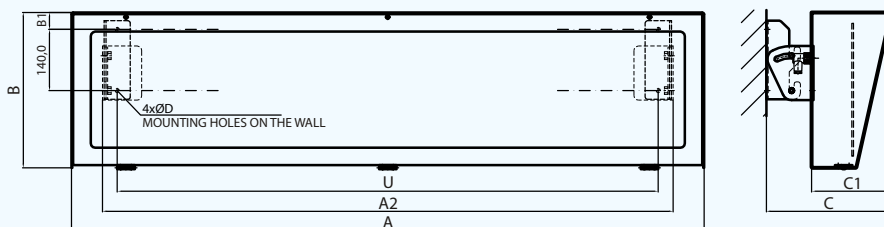
NDI 57/x, NDI 100/x, NDI 57/5 W, NDI 100/5 W



NDU 57/x, NDU 100/x



NDI 212/5 W



TYPE	A	B	C	A1	B1	C1	A2	U	V	ØD	Weight (kg)
NDI 57/3	377	163	225	317	100	140	333	260	70	12	7,4
NDI 57/4	425	163	225	365	100	140	381	232	70	12	7,9
NDI 57/5	473	163	225	413	100	140	429	280	70	12	8,6
NDI 57/5 W	549	163	225	489	100	140	505	356	70	12	8,8
NDI 100/3	585	220	313	513	140	210	529	450	100	12	12,4
NDI 100/4	677	220	313	603	140	210	619	540	100	12	14,4
NDI 100/5	767	220	313	693	140	210	709	630	100	12	16,5
NDI 100/5 W	823	220	313	749	140	210	765	630	100	12	18,0
NDI 212/5 W	1450	359	290	-	39	182	1308	1240	-	9	39,0
NDU 57/3	330	160	135	-	64	76	-	210	-	7	2,9
NDU 57/4	380	160	135	-	64	76	-	260	-	7	3,3
NDU 57/5	430	160	135	-	64	76	-	310	-	7	3,7
NDU 100/3	510	220	135	-	64	76	-	340	-	7	5,2
NDU 100/4	600	220	135	-	64	76	-	430	-	7	6,0
NDU 100/5	690	220	135	-	64	76	-	520	-	7	6,8